

# Allia<sup>TM</sup> with CleaRecon DL

Deep learning comes to CBCT image reconstruction

Use AI to remove remaining barriers for CBCT adoption and improve confidence in interventional treatment strategy

## Seamless workflow

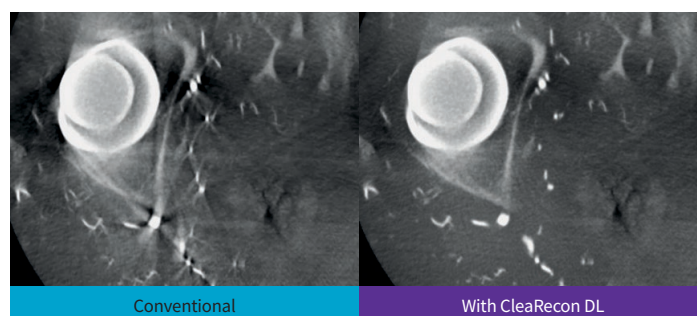
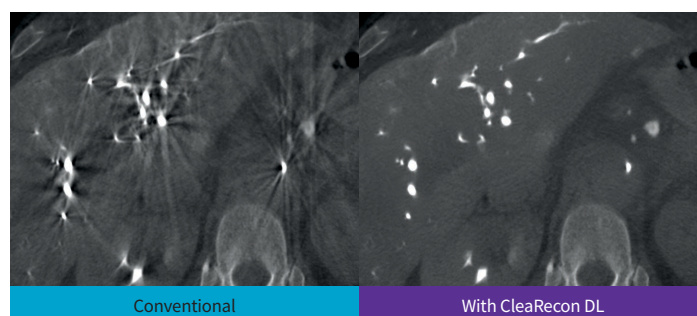
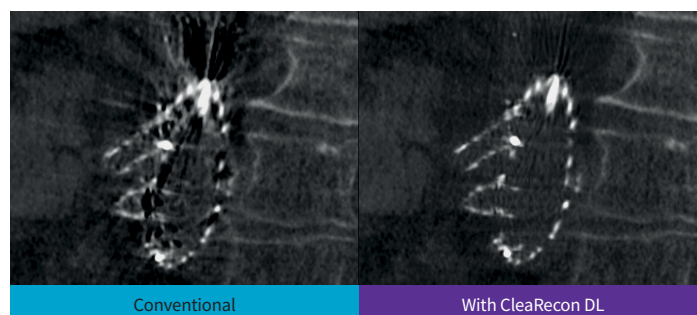
Designed to deliver clearer CBCT images. In **98%** of cases, CBCT images reconstructed with CleaRecon DL are clearer than the conventional CBCT images<sup>1,2</sup>.

## Remarkable images

Helps to improve the CBCT image interpretation confidence. In **94%** of cases, CleaRecon DL improves the CBCT image interpretation confidence<sup>1,3</sup>.

## Accelerated adoption in clinical routine

Developed to ease CBCT adoption in routine. CleaRecon DL takes CBCT image quality to the next level by removing streak artifacts, without introducing other artifacts<sup>1,4</sup>.



1. When compared to a CBCT image reconstructed using a conventional technique. Based on a reader study of 110 CBCT datasets, including liver, abdominal, pelvic, graft, stent, head and other anatomy views. Each dataset has been reviewed by at least 3 reviewers independently. In total 13 clinicians were involved in the reader study (interventional radiologists, interventional neuroradiologists and vascular surgeons). CleaRecon DL and conventional reconstructed CBCT were compared side by side.
2. In 98% of the cases, reviewers concluded that CleaRecon DL provides a clearer or significantly clearer image.
3. In 94% of the cases, reviewers concluded that CleaRecon DL improves or significantly improves the image interpretation confidence.
4. In 99% of the cases, reviewers concluded that CleaRecon DL improves image quality by removing streak artifacts, without introducing other artifacts. Some streak artifacts may nevertheless still be present.

CleaRecon DL is an option in 3DXR designed to be used with Allia systems and requires AW workstation with Volume Viewer. May not be available in all countries.

Allia refers to Allia systems that cannot be marketed in countries where market authorization is required and not yet obtained. Refer to your sales representative.